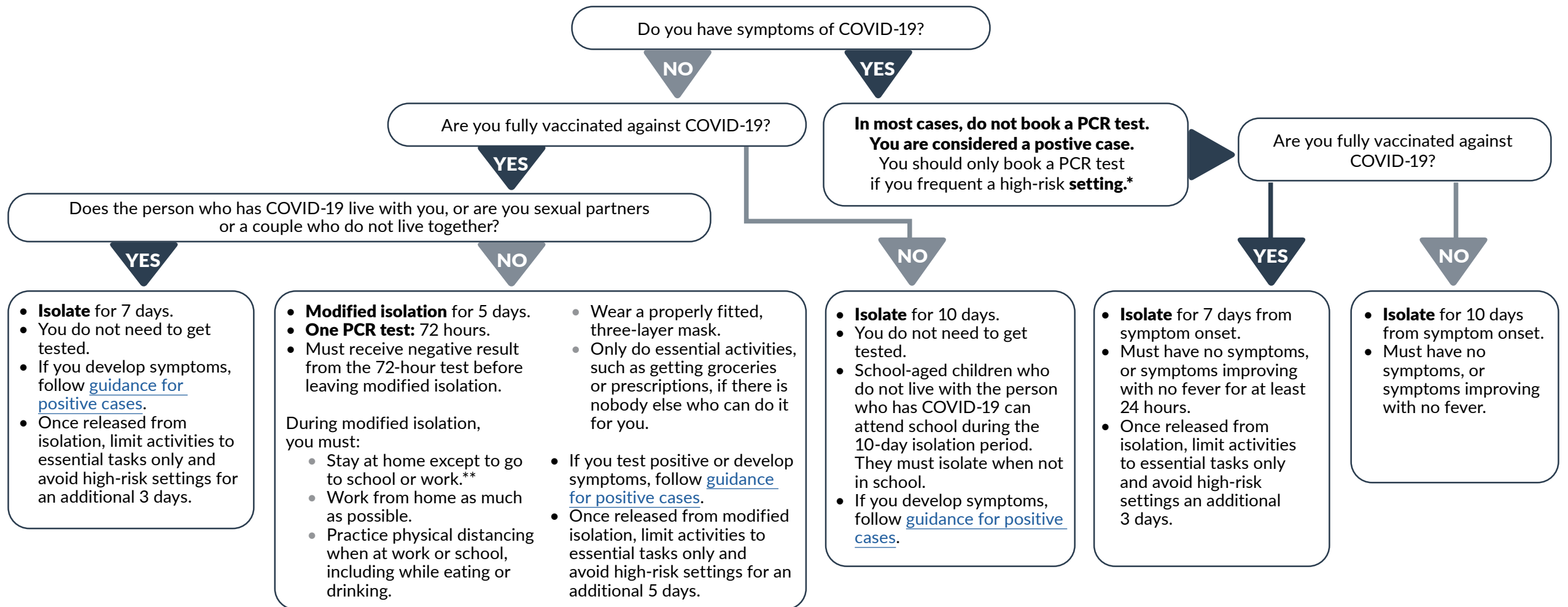


You are a close contact of someone who has COVID-19.

Now what?

If you develop symptoms at any point, you are considered a **positive case**. Isolate immediately and complete this questionnaire again for guidance.



Essential tasks means activities you must do, like going to school, work, or grocery shopping. **High-risk settings** include non-essential visits to a long-term care home, school, or child care setting.

* You should only book a PCR if you work in health care; as a first responder; with the Coast Guard; in a correctional facility; you work in or attend a day care, emergency shelter, transition house, or other housing program serving vulnerable populations; or, you live in a long-term care facility, personal care home, community care home, or assisted living facility.

** Staff working in long-term care, personal care home, home support, in a correctional facility, a day care, emergency shelter, transition house, or other housing program serving vulnerable populations should not go to work unless they are critical for service provision. In this case, they should follow [essential worker protocols](#).